

Respect

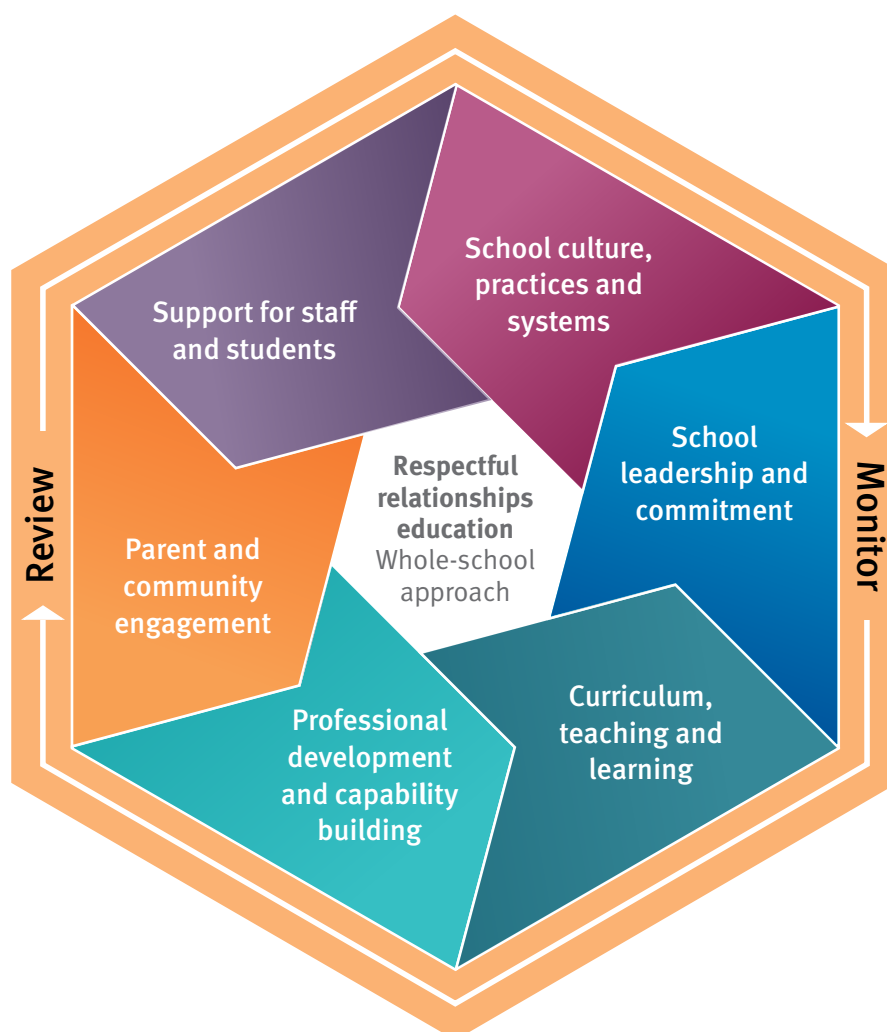
Respectful Relationships Education
for Queensland Schools

A whole-school approach to respectful relationships education

Effective respectful relationships education implementation uses a whole-school approach to promote gender equality and respect. Consent education is an important component of respectful relationship education (RRE).

The department has developed an [RRE – whole-school approach checklist](#) to help schools identify actions they can take to enhance RRE delivery in your school.

This approach involves actions across six areas.





1. **School culture, practices and systems** – Schools are encouraged to examine their school policies, practices, physical environment and culture to ensure opportunities for students and staff are equitable and promote gender equality and respect.



2. **School leadership and commitment** – RRE and positive cultural change is most effective when it's driven by school leadership teams that prioritise this work. This includes identifying actions within the school's Strategic and Annual Operational Plan to strengthen respect across the school community.



3. **Curriculum, teaching and learning** – In line with the Australian Curriculum: Health and Physical Education, schools are encouraged to review their RRE delivery to ensure programs intentionally and positively shape students' attitudes and behaviours. The [Respect program](#) provides schools with easy to use, quality Prep to Year 12 teaching and learning materials. Materials are aligned with the Australian Curriculum to complement and enhance your school program.



4. **Professional development and capability building** – Professional development that allows staff the opportunity to unpack RRE content within the Australian Curriculum and examine the Respect program materials is key to delivering programs that meet student needs. The [Respect program](#) contains guidelines and advice on teaching pedagogy to support RRE delivery.



5. **Parent and community engagement** – It's important that families and organisations your school interacts with reinforce messages and behaviours that demonstrate respect. Keeping families informed about your program through your school newsletter, parent events and other communications can provide families with the opportunity to have similar discussions about respect at home. The department's [Parent and Community Engagement Framework](#) is a useful resource to support engagement.



6. **Support for staff and students** – Schools are well-versed in identifying and responding to risks of harm in students. Recognising indicators of domestic, family and sexual violence and referring impacted students, families and staff to internal and/or external supports is an important component of your whole-school approach. The [RRE hub](#) has information to help schools respond to domestic, family and sexual violence.