



# Trends from the AEDC 2012 to 2021 in Queensland

The AEDC is a national census of early childhood development at the time children commence their first year of full-time school. To learn more about the AEDC, visit [qld.gov.au/aedc](http://qld.gov.au/aedc) or visit the national website [aedc.gov.au](http://aedc.gov.au)



## Who took part?



Approximately **3,500** teachers completed the census



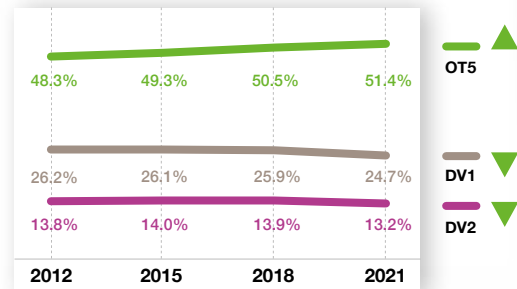
Approximately **65,000** children were included

More than 98% of eligible Queensland children

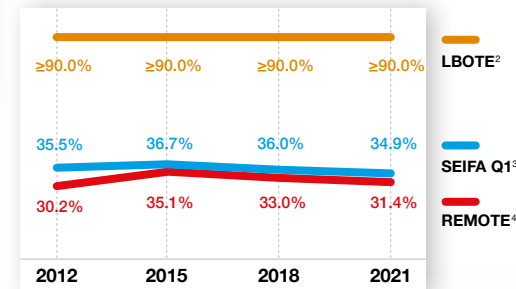


**1,405** schools participated in 2021

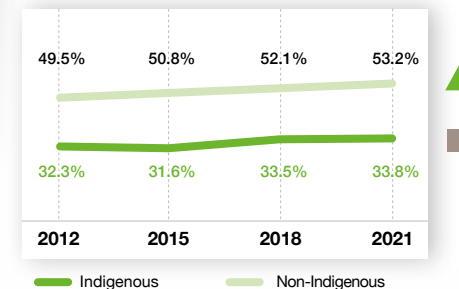
## Summary indicators<sup>1</sup>



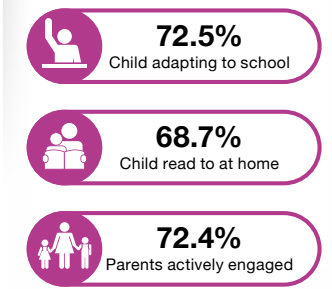
## DV1 equity groups



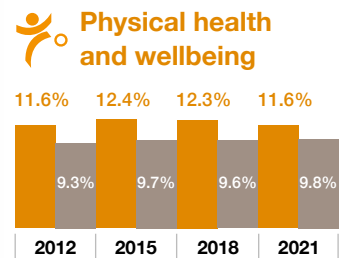
## OT5 Indigenous<sup>5</sup>



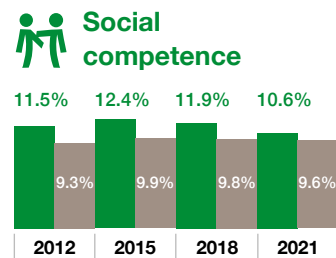
## Transition indicators<sup>6</sup>



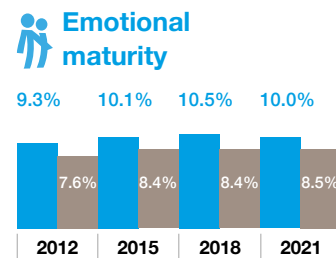
## Domains



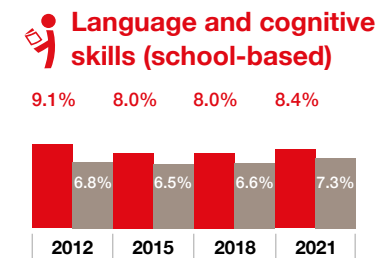
Developmental vulnerability has significantly **decreased** since 2018.



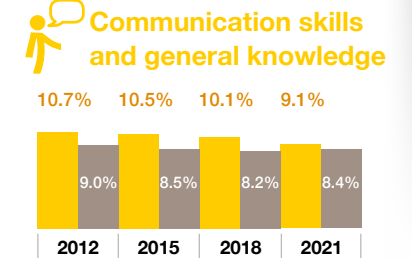
Developmental vulnerability has significantly **decreased** since 2018.



Developmental vulnerability has significantly **decreased** since 2018.



Developmental vulnerability has significantly **increased** since 2018.



Developmental vulnerability has significantly **decreased** since 2018.

Queensland Australia

Significant change key 2018–2021:

- ▲ = significant increase
- ▼ = significant decrease
- = no significant change
- Green = positive change
- Red = negative change

<sup>1</sup> Developmentally vulnerable on one or more domain(s) (DV1), developmentally vulnerable on two or more domains (DV2) and on track on five domains (OT5).

<sup>2</sup> LBOTE: Language Background other than English - not proficient in English.

<sup>3</sup> SEIFA Quintile 1: Socio-Economic Indexes for Area (SEIFA) Quintile 1 refers to communities experiencing high levels of socio-economic disadvantage (lowest 20% of SEIFA scores).

<sup>4</sup> Remote: Children living in remote/ very remote areas.

<sup>5</sup> The word Indigenous refers to Aboriginal and Torres Strait Islander people of Australia.

<sup>6</sup> Transition indicators: percentage of Queensland children whose teacher answered 'very true' (2021).

